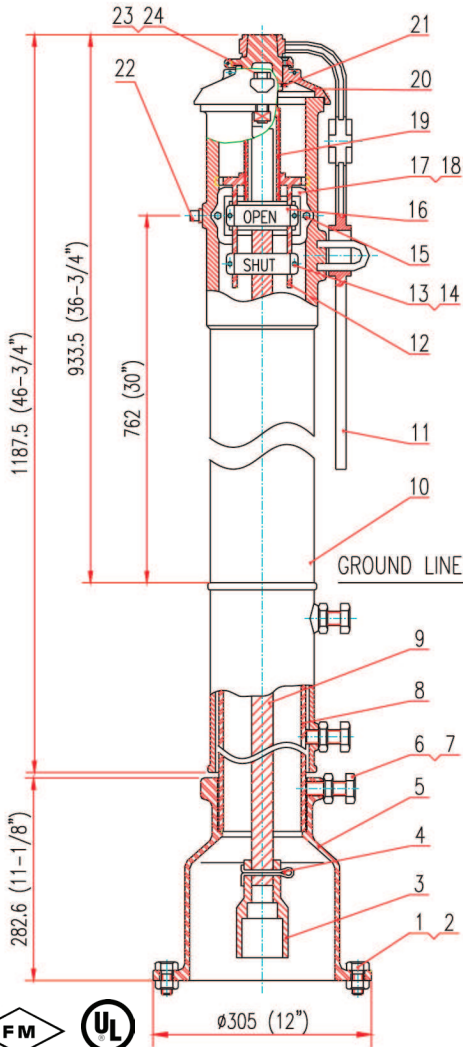


VERTICAL INDICATOR POST

- Remove the Top Section from the top indicator post assembly
 - Reattach the bottom section to the top of the indicator
 - Cut the required stem length and adjust the Standpipe to match up the Ground Line
 - Set the OPEN and SHUT targets for appropriate size
- Depressurize and drain the piping system before attempting to install, remove, adjust, or maintain piping products

Description

VERTICAL INDICATOR POST



■ Valve is Resilient Seated

NO.	COMPONENT	MATERIAL
1	Hex Cap Screw	Carbon Steel ASTM A307B
2	Hex Nut	Carbon Steel ASTM A307B
3	Crane Couplin	Ductile Iron ASTM A536 Gr. 65-45-12
4	Cotter Pin	Stainless Steel AISI 304
5	Base Flan	Cast Iron ASTM A126 Class B
6	Hex Nut	Carbon Steel ASTM A307B
7	Hex Cap Screw	Carbon Steel ASTM A307B
8	Standpipe	Carbon Steel ASTM A53
9	Stem 1" Square	Carbon Steel AISI 1045
10	Bod	Cast Iron ASTM A126 Class B
11	Wrench	Ductile Iron ASTM A536 Gr. 65-45-12
12	Target Carrier Nut	Bronze ASTM B62 C83600
12	Target Carrier Nut	Stainless Steel AISI 304
13	Hex Cap Screw	Carbon Steel ASTM A307B
14	Hex Nut	Carbon Steel ASTM A307B
15	Hex Cap Screw	Carbon Steel ASTM A307B
16	Tar	Cast Aluminum
17	Window Glass	Plexiglass
18	Gasket	PTFE
19	Operating Nut	Bronze ASTM B62 C83600
19	Operating Nut	Stainless Steel AISI 304
20	Top Section	Cast Iron ASTM A126 Class B
21	Snap Ring	Stainless Steel AISI 1066
22	Plug	Malleable Iron
23	Square Nut	Carbon Steel ASTM A307B
24	Hex Cap Screw	Carbon Steel ASTM A307B

ITEM CODE

UFP011

Extension Sleeve Length	Extension Rod Length	TRENCH DEPTH							Weight in Pounds
		2-1/2" Valve	3" Valve	4" Valve	6" Valve	8" Valve	10" Valve	12" Valve	
A-Post 3'	6'	3'-4" to 5'-4"	3'-8" to 5'-8"	3'-8" to 5'-8"	4'-1" to 6'-1"	4'-5" to 6'-5"	4'-9.5" to 6'-9.5"	5'-2" to 7'-2"	252
B-Post 4'-6"	7'-6"	4'-10" to 6'-10"	5'-2" to 7'-2"	5'-2" to 7'-2"	5'-7" to 7'-7"	5'-11" to 7'-11"	6'-3.5" to 8'-3.5"	6'-8" to 8'-8"	282
Turns to Open		8	8	10 1/2	12 1/2	16 1/2	20 1/2	24 1/2	

www.sigmaco.com

Fire Valve